

BASCO Low Pressure Gauges

BP9 Series

- Black painted steel case (also available in full SS for Badotherm, **BDT9-08** Model)
- Brass diaphragm
- Press fit plexiglas lens
- Standard ranges in mbar or equivalent: 0/25 to 0/600 mbar, 0/10 to 0/240" WC
- Fitting 1/4" npt
- Accuracy ±1.6% FS at 20°C



Basco

Model	Description
BBP9A63	63mm (2 1/2") lower mount (lm) fitting
BBP9D63	63mm (2 1/2") center back mount (cbm) fitting
BBP9E63	CBM with front flange (flush mounting)

Popular Range Codes (other ranges on request)		
Range Code	Range	
010CEP	10" CE	2.5 kPa
015CEP	15" CE	4.0 kPa
030CEP	30" CE	7.5 kPa
060CEP	60" CE	15 kPa
100CEP	100" CE	25 kPa
200CEP	200" CE	50 kPa
003PSI	3 psi	20 kPa
005PSI	5 psi	35 kPa
010PSI	10 psi	70 kPa
010CEV	-10" CE/Vac	-2.5 kPa/Vac
015CEV	-15" CE/Vac	-4.0 kPa/Vac
030CEV	-30" CE/Vac	-7.5 kPa/Vac
060CEV	-60" CE/Vac	-15 kPa/Vac
100CEV	-100" CE/Vac	-25 kPa/Vac
200CEV	-200" CE/Vac	-50 kPa/Vac

To order
Model + Range Code
BDT9A63-005PSI
(63 or 100 mm)



Also available
all stainless steel

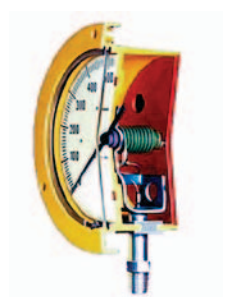
BDT9-8
Badotherm

PERMA-CAL Direct Drive Test Gauges

TEST Series (101T)

- 4.5" dial, ±0.25% FS accuracy Grade 3A
- Black Turret case (back flange) with safety wall • Adjustable pointer
- X-750 Inconel Helical wound tube
- Only one moving part No gears, linkages, or springs to wear or break
- 316SS fitting, 1/4 or 1/2, lower or back mount
- Patented movement, more precise, does not need glycerin
- Comes with a NIST calibration certificate

Code	Range
101TTM25A21	30"Hg/0 Vac
101TTM27A21	30"Hg/0/30 psi
101TTM24A21	30"Hg/0/60 psi
101TTM29A21	30"Hg/0/100 psi
101TTM28A21	30"Hg/0/150 psi
101TTM30A21	30"Hg/0/200 psi
101TTM31A21	30"Hg/0/300 psi
101TTM32A21	30"Hg/0/400 psi
101TTM33A21	30"Hg/0/500 psi
101TTM34A21	30"Hg/0/600 psi
101TTMBAA21	0/30 psi 0/200 kPa
101TTMBCA21	0/60 psi 0/400 kPa
101TTMBDA21	0/100 psi 0/700 kPa
101TTMBEA21	0/150 psi 0/1000 kPa
101TTMBFA21	0/200 psi 0/1400 kPa
101TTMBGA21	0/300 psi 0/2000 kPa
101TTMBIA21	0/500 psi 0/3500 kPa
101TTMBQA21	0/600 psi 0/4000 kPa
101TTMBKA21	0/1000 psi 0/7000 kPa
101TTMBMA21	0/1500 psi 0/10000 kPa
101TTMBNA21	0/2000 psi 0/14000 kPa
101TTMBPA21	0/3000 psi 0/20000 kPa
101TTMBRA21	0/5000 psi 0/35000 kPa
101TTMBTA21	0/10000 psi 0/70000 kPa



Standard 1/4" npt, Lower mount

Other models

Model 121TIS Accuracy ±0.5% MS ±1% FS
0-60 psi to 3000 psi, without certificate

Model 111TIS Accuracy ±0.5% FS
0-60 psi to 3000 psi, without certificate

On Request :
Color/Cases: blue, green, red, white, yellow, steel, metal and SS
Dials: 2.5", 3.5", 6" and 8.5" diameter
Back mount or 1/2" npt
Case: front flange, flangeless, back flange
Accuracy: ± 0.5 % or 1.0 %

Accessories
ENFM Welded Diaphragm Seals

Economical 05 Series

- All 316 SS
- (05-10) for ranges of -25"Hg/vac to 300 psi, (05-15) for 100 to 2000 psi, (HP) for 1000 to 5000 psi; -20 to 200°C
- Size 50 x 45 mm (2" x 1 13/16")
- For 2.5", 4" and 4.5" dial size

Code	Gauge Side	Process Side
05-100	1/4 npt	1/4 npt
05-101	1/4 npt	1/2 npt
05-102	1/2 npt	1/2 npt
05-150	1/4 npt	1/4 npt
05-151	1/4 npt	1/2 npt
05-152	1/2 npt	1/2 npt
HP-100	1/4 npt	1/4 npt



HYETT Welded Diaphragm Seals

15AW and 25AW Series

- All 316 SS
- (15AW) for ranges of 0/100 to 0/2000 psig at 100°F or (25AW) for ranges -25"Hg/vac to 0/10000 psi at 100°F
- Available with 1/4" npt purge port (25AWF)

Code	Gauge Side	Process Side
15AW-4I41	1/4" npt	1/4" npt
15AW-4I21	1/4" npt	1/2" npt
25AW-4I41	1/4" npt	1/4" npt
25AW-4I21	1/4" npt	1/2" npt
25AWF-4I11	1/4" npt	1" npt



15AW upto 3 1/2 in
25AW upto 4 1/2 in
GAUGES ONLY

SS-4-P SS 316 1/4" npt plug

See 42M and 42M01 series for 4", 4.5" and 6" dial gauges

WEKSLER Digital Gauges

Type WDG4251L

- Accuracy ±0.5% FS
- Resolution 5 digits
- Dial size 2 1/2" x 1/4" bottom mount, polycarbonate case, 316 SS fitting
- ON/OFF button with variable auto shut-off, peak hold
- Choice of units : psi, in.Hg, cmHg, kPa, MPa, bar, kg/cm², ftH₂O
- Battery 2 AA, 2000 hours
- Backlight (OFF by default), 3, 9 or 12 hours connector, rubber boot (XBI), custom made keyboard
- Working temperature: -10 to +60°C

Code	Plage
W-DG4251LVC4L-XBI	30"/0/vac.
W-DG4251LPC4L-XBI	0-15 psi
W-DG4251LPD4L-XBI	0-30 psi
W-DG4251LPE4L-XBI	0-60 psi
W-DG4251LPF4L-XBI	0-100 psi
W-DG4251LP14L-XBI	0-150 psi
W-DG4251LP4L-XBI	0-200 psi
W-DG4251LPJ4L-XBI	0-300 psi
W-DG4251LPL4L-XBI	0-500 psi
W-DG4251LPP4L-XBI	0-1000 psi
W-DG4251LPS4L-XBI	0-2000 psi
W-DG4251LPT4L-XBI	0-3000 psi
W-DG4251LPV4L-XBI	0-5000 psi
W-DG4251LPY4L-XBI	0-10,000 psi
W-DG4251LPZ4L-XBI	0-15,000 psi
W-DG4251LP24L-XBI	0-20,000 psi

