

COBEX Temperature Recorders

- Microprocessor based, 1 or 2 pen recorders
- Chart size 4", 6", 8" or 10" dia, 24 hours, 7 days
- 110 V / 220 V, battery back-up
- Accurate and fast
- Relay output, 1 or 2, DPDT
- Wall mount surface or flush, portable
- Input RTD, 0-10 V, 0-5 V, 1-5 V, 4-20 mA
- Accuracy temperature $\pm 0.25^\circ\text{C}$ (0.5°F)
- Accuracy current/voltage $\pm 0.25\%$ FS
- Also available humidity-temperature

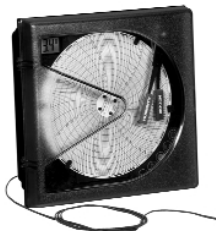


Code	6" dia models	Price
C6-157-CF-00-11Y0	Recorder, 6" dia, 0-100° C, 24 hours, 110 V, probe RTD 1/4" dia x 3" x 15 ft of wire	\$ 1122
C6-157-CF-CF-11Y0	Recorder, 6" dia, 0-100° C, 24 hours, 110 V, 2 probe RTD 1/4" dia x 3" x 15 ft of wire	\$ 1309

DICKSON Temperature Recorders

KT6 series

- Type K thermocouple input
- Range of -100 to 500°F (programmable)
- Accuracy $\pm 1.8^\circ\text{F}$ (1°C)
- Options: digital display, alarms and relay outputs
- Chart size of 6" dia, 120 Vac
- 24 hours & 7 days
- Complete with AC adapter, pens, 9V battery, 60 charts (C657) and 4 ft thermocouple wire-probe



Code	2 channels	Audible alarm	Relay	Price
KT602		✓		\$ 719
KT603		✓	✓	\$ 899
KT655	✓	✓	✓	\$ 1079
P222	replacement red pens			\$ 75

Ranges	24 hours charts	7 days charts
-50 to +50° F/C	C652	C651
0 to $\pm 50^\circ\text{F/C}$	C654	C653
0 to $\pm 100^\circ\text{F/C}$	C658	C657
0 to +250° F/C	C660	C659
0 to +500° F	C662	C661
50 to +100° F/C	C656	C655

DICKSON Temperature Recorders

KTX model

- Type K thermocouple input
- Digital display, audible alarm
- Chart size 8" dia, 120Vac
- Accuracy $\pm 1.8^\circ\text{F}$ (1°C)
- 24 hours, 7 days & 31 days
- Complete with AC adapter, pens, 9V battery, 60 charts: KTX (C412), KTXE (C44) and 4 ft thermocouple wire-probe



Code	Ranges	24 hours charts	7 days charts	31 days charts	Price
KTX	-50 to +50°F/C	C411	C414	C406	\$ 1145
	0 to $\pm 100^\circ\text{F/C}$	C410	C412	C409	
	0 to +250°F/C	C432	C439	C407	
	0 to +500°F/C	C428	C459	C408	
KTXE	0 to +250°F/C	C432	C439	C407	\$ 1385
	0 to +500°F/C	C428	C459	C408	
	0 to +1000°F/C	C441	C440		
	0 to +2000°F	C443	C444		

COOPER Clamp-On Temperature Probe

Models 4005/4005MK

- For pipes 1 3/8" (34.9 mm) diameter
- Thermistor range (4005) -40/150°C (-40/300°F)
- Type K thermocouple range (4005MK) -30/150°C
- Response time 12 sec (4005) and 2 sec (4005MK)
- Standard 3m cable (10 ft)
- Warranty 1 year



Code	Description	Price
4005	Thermistor clamp-on probe	\$ 155
4005MK	Type K Thermocouple clamp-on probe	\$ 155

DICKSON Humidity-Temperature Recorder

Model THDX

- Temperature, relative humidity, dew point
- Digital display, audible alarm
- Chart 8" dia, 120Vac
- Detachable probe with 6 ft of cable
- Accuracy $\pm 1.8^\circ\text{F}$ (1°C), $\pm 2\%$ RH
- 24 hours, 7 days and 31 days
- Complete with AC adapter, pens, 9V battery



Ranges	24 hours charts	7 days charts	31 days charts
-20 to +120° F	C415	C417	C480
+40 to +110° F	C476	C477	C481
-20 to +50° C	C472	C473	C482
+5 to +40° C	C478	C479	C483

Code	Description	Price
THDX	Humidity temperature recorder	\$ 1199
A834	Calibration kit RH (33% and 75%)	\$ 359
A860	10 feet extension cable	\$ 73
A865	50 feet extension cable	\$ 125
A866	100 feet extension cable	\$ 179
A709	Hard carrying case	\$ 179
A867	Dust filter (for RH >70%)	\$ 39

DICKSON Humidity-Temperature Recorder

TH6 series

- Temperature and humidity, digital display
- Ranges of the TH602 : 0 to 50° C, 32 to 100° F
- Ranges of the TH603 : 0 to 50° C, 32 to 100° F, 0 to 100° F
- Chart 6" dia, 24 hours or 7 days rotation
- Audible alarm and relay SPDT outputs 24V 0.5A (TH603)
- Range of 10 to 95% RH $\pm 2\%$
- Remote probe with 6 ft cable (TH603)
- Complete with AC adapter, pens, battery and 60 charts



Ranges	24 hours charts	7 days charts
0 to 50° C	C664	C663
0 to 100° F/C	C658	C657
0 to 185° F	C667	C665

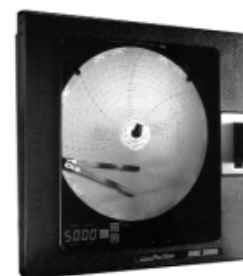
Code	Description	Price
TH602	Hygro-thermograph with digital display	\$ 899
TH603	Hygro-thermograph with digital display, remote probe, alarm and relay	\$ 1079

Accessories see THDX

PARTLOW Digital Recorder

MRC 5000 / RKC CCR5 models

- Easy to program
- Universal input: thermocouple type J, K, T, R and S; RTD Pt100; Current DC 0 to 20 mA or 4-20 mA, Voltage DC 0 to 25 mV, 0 to 50 mV, 10 to 50 mV and 0 to 5 V
- 1 or 2 pens (red and green)
- Chart 10" diameter
- Choice of rotation : 8h, 12h, 24h, 48h or 7 days
- Digital display
- Up to 2 alarm outputs (SPDT 5A at 115 Vac)
- Supply 90..264 Vac 50/60 Hz or 20..50 Vac 22..65 Vdc (optional)
- NEMA 3 or NEMA 4X case, 14" x 14" x 3,8"
- Available with RS485 communication
- Complete with mounting bracket and box of chart (your choice)



Popular models

Code	Description	Price
51100011	1 pen, NEMA 3, 90-264 Vac	\$ 1115
51100011	2 pens, NEMA 3, 90-264 Vac	\$ 1400